





VACUUM CLEANER



VMX25



VMX70



VMX35



AXM30



VMX80

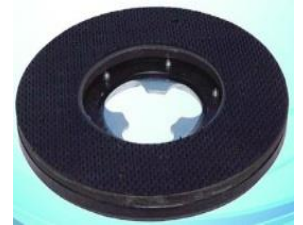
SPECIFICATIONS:

MODEL	VMX25	AXM30	VMX35	VMX70	VMX80
POWER (W)	1800	1800	1800	3000	4500
VOLTAGE (V)	240	240	240	240	240
CAPACITY (L)	25	30	35	80	80
HEIGHT (CM)	55	57	76	93	95
DIAMETER (CM)	32	32	32	43.5	43
AIR FLOW (L/s)	53	53	53	106	120
FUNCTION	WET / DRY	WET / DRY	WET / DRY	WET / DRY	WET / DRY
LENGTH OF CABLE (M)	5	5	5	5	5



SPECIFICATIONS FOR VMX-522

POWER (W)	VOLTAGE (V)	SPEED (RPM)	CHASSIS DIAMETER (INCH)	WIRE LENGTH (M)
1800	240V	175	17	12



VMX-522 FLOOR BURNISHER



SPECIFICATIONS FOR VMX-534

POWER (W)	VOLTAGE (V)
1100	240V

VMX-534 FLOOR DRYER (RED)



SPECIFICATIONS FOR VMX-CC035

POWER (W)	VOLTAGE (V)	CAPACITY (L)	VACUUM SUCTION (BAR)	AIR FLOW VOLUME
1800	240V	35	20	53

PUMP PRESSURE (PSI)	WATER PUMP	ACCESSORIES DIAMETER (MM)
20	240VAC/34W	40

VMX-CC035 CARPET EXTRACTOR



SPECIFICATIONS FOR VMX-1000

MAXIMUM WORK EFFICIENCY	WORKING WIDTH
3680 M/H	980 MM

BUCKET CAPACITY	WEIGHT
45L	45L

VMX-1000 HAND PUSH SWEEPER



SPECIFICATIONS FOR 999-HAND DRILL



POWER (W)	VOLTAGE (V)	SAFE RANGE OF HIGH PRESSURE HOSE	MAX OUTPUT PRESSURE	RESTARTED PRESSURE
910W	220V/50HZ	14000 PSI	18000 PSI	7500 PSI

**VOMAX 999 GROUNDING MACHINE
HAND DRILL TYPE**



POWER (W)	VOLTAGE (V)	SAFE RANGE OF HIGH PRESSURE HOSE	MAX OUTPUT PRESSURE	RESTARTED PRESSURE
910W	220V/50HZ	14000 PSI	18000 PSI	7500 PSI

VOMAX 999 GROUNDING MACHINE



SPECIFICATIONS FOR POKER

POWER (W)	VOLTAGE (V)	POKER HEAD DIAMETER	RPM	MAINS CABLE (METER)
1200	220V-50HZ	35	4200	1.2/1.5

VOMAX POKER SET (1.2M/1.5M)



SPECIFICATIONS FOR AIR SANDER

MAX. SPEED	WORKING PRESSURE	HOSE SIZE	AIR INLET SIZE	SANDPAPER SIZE
10000 RP	90PSI	3/8"	1/4"	125MM

TOP-213 5" AIR SANDER



SPECIFICATIONS FOR VMX1200

VOLTAGE	DIAMETER	NO LOAD SPEED	FUCTION MODE
12V	10MM	0-550/0-1200 R/MIN	3 TYPE

VOMAX 1200 IMPACT CORDLESS DRILL



SPECIFICATIONS FOR VMX980

MOTOR POWER (W)	MAXIMUM FLOW (L/min)	MAXIMUM PRESSURE	LONGEST TAKEOVER	VOLTAGE FREQUENCY
4000W	20 L/min	3200 PSI	15-45M	220V 50/60Hz

VOMAX 980 AIRLESS PAINT SPRAYER



SPECIFICATIONS FOR VMX-Q909B

TANK CAPACITY	WORKING PRESSURE	MAX OPERATING PRESSURE	MATERIAL	ACCESSORIES
70 LITER	1-3BAR (14.5-43.5 PSI)	4 BAR (58 PSI)	STAINLESS STEEL	HOSE,NOZZLE

VOMAX Q909B S/STEEL SNOW WASH TANK